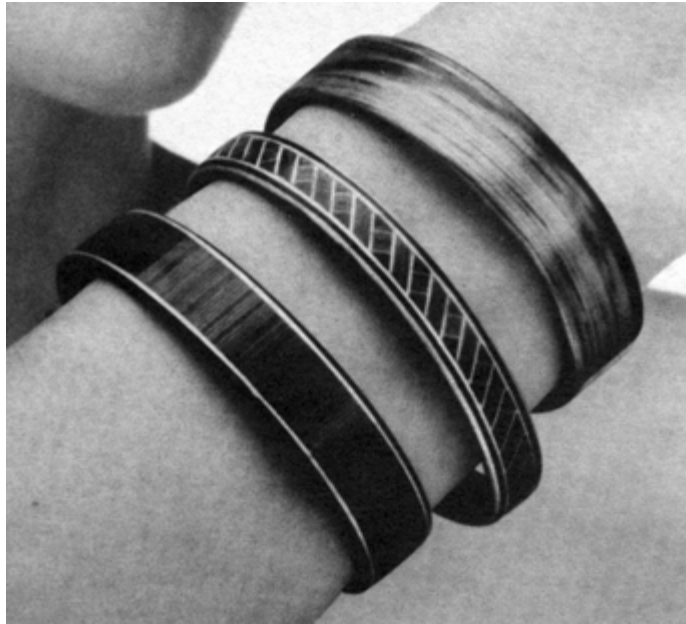
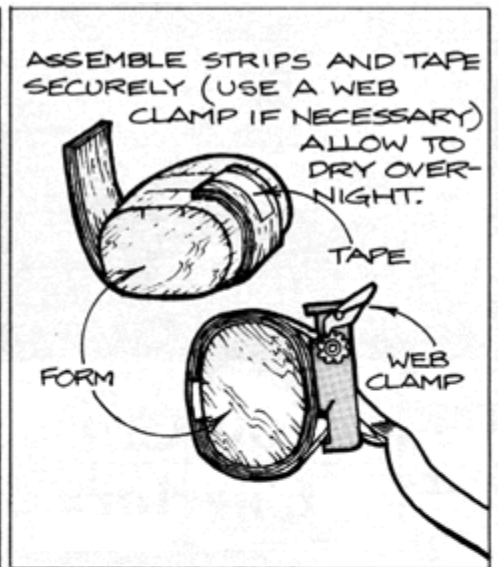
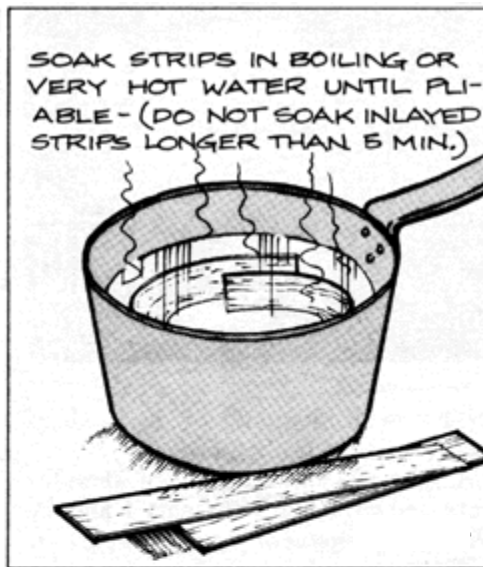
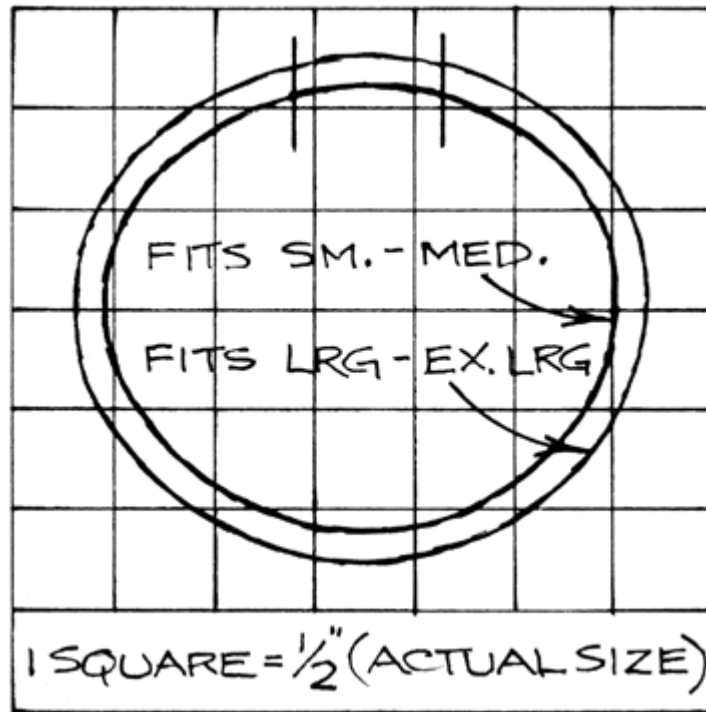


Project 16458EZ: Veneer Bracelets



These lovely bracelets require little time or materials – two features that many woodworkers look for when selecting a project. They also make ideal gifts for friends and relatives, or to sell at gift shops and craft fairs.



Veneer Bracelets Step-by-Step Instructions

Step 1: Purchase Veneer and Inlay Banding

1. Purchase enough 1/32" thick veneer to make each bracelet desired. **NOTE: When selecting veneer, it's best to stick with a stock that's straightgrained. Burl and crotch stock are likely to split when bent, so avoid them.**
2. Purchase inlay banding for bracelets that you would prefer to have this replace the outer strip of veneer.

Step 2: Make the Bracelet Form

1. Face-glue two pieces of 3/4" thick by 3-1/2" square pine.
2. Scribe the appropriate profile from the full-size pattern. **NOTE: The profiles shown serve only as a guide, so you may want to make yours bigger or smaller.** Use a band or saber saw to cut out the profile.
3. Sand the profile smooth.

Step 3: Make the Bracelet

1. Select a suitable piece or suitable pieces of veneer for each bracelet.
2. Use a veneer saw or sharp razor knife to cut each piece (with the grain running lengthwise) to the desired width. **NOTE: Be sure the veneer doesn't overlap when bent around the form.**
3. Bring a pan of water to a boil.
4. Remove the water from the heat.
5. Soak the strips in the hot water until pliable (5-10 minutes). **NOTE: DO NOT soak the inlay strips for more than 5 minutes or the small pieces may begin to separate.**
6. Remove the strips from the water.
7. Wrap the strips around the form.
8. Secure the strips in place with a web clamp or masking tape
9. Allow the strips to dry overnight.
10. Remove the strips from the form and apply glue. Be sure to cover the surfaces thoroughly.
11. Apply a coat of paste wax to the form to keep the veneer from adhering to the form.
12. Reassemble the strips and secure with the web clamp or masking tape.
13. Allow to dry at least two hours.
14. Use sandpaper to sand all surfaces smooth, particularly the edges and the ends.
15. Apply Deft's clear semi-gloss interior finish for an attractive final finish. Dip the bracelets into the finish by fastening string to them with thumbtacks.